



NORTHWAY VOICE

Parish Assembly

The annual Parish Assembly will be taking place on **Wednesday 27th March 2024, 7.30pm at Northway Community Hub and Parish Office.**

This is a meeting for Northway residents but it is chaired by the Council Chairman and gives an opportunity for people to come and hear about what has been going on in the local area and ask questions, not just from the Parish Council's perspective but from local community groups, schools, churches and organisations, should they wish to come and give a report. **There will be a presentation from Chris Ashman, the Executive Director of Place at Tewkesbury Borough Council regarding the Garden Communities Programme.** This is a subject that there is great local interest in.

Also, during the evening, the Parish Council will be presenting a couple of awards to people who have stood out for their community service over the past year, or longer, and to whom special recognition should be made.

A **free buffet** will be offered following the meeting to which you are all invited to stay and enjoy. Please do come along if you are able.

Warm Space



Cllr Pauline Godwin helping to run the Warm Space



Warm Space attendees



Warm Space attendees

Coronation Artwork Unveiling

Following on from the last issue of Northway Voice, the Council is pleased to announce that the wonderful mural it commissioned local artist, Sam Morris, to create using local school children's Coronation Trail artwork is on display at the Community Hub.

Some of the children, and their teachers, were invited to Northway Community Hub back in November and Noah, who drew the main image of Buckingham Palace, assisted Cllr Sandra Terry in unveiling the finished piece.

Since then, the Council was thrilled to receive a letter from Buckingham Palace, on behalf of His Majesty, King Charles, expressing that he was 'particularly touched' that Northway wished to commemorate the Coronation in this way.



Noah and Cllr Terry unveiling the mural



Noah with his original artwork



Northway Parish Councillors along with Sam Morris (artist)



Special delivery from Buckingham Palace

Northway Community Hub is once again running a Warm Space every Monday and Tuesday from 10am - 2pm.

Come along to enjoy some good company, hot drinks, refreshments, board games, puzzles, magazines and a lunch of soup with a warm roll.

This is all provided completely free of charge thanks to a grant from Tewkesbury Borough Council and the generosity of volunteers giving up their spare time to help set up and run the sessions.

Fresh fruit has once again been kindly donated by Woody's Farm Shop.

Biodiversity Policy

Biodiversity is the variety of all life on Earth, which includes all species of animals and plants. This is linked to our own wellbeing.

Northway Parish Council has adopted a model biodiversity policy that has been developed for Gloucestershire parish councils. This can be found on the Parish Council's webpage (www.northwaypc.org.uk/mdocs-posts/northway-parish-council-biodiversity-policy).

The Parish Council can spend funds in such a way as to protect biodiversity by making decisions that keep the variety of life within the Northway area. It can especially do this on Council-owned areas such as Platinum Park, Joan's Field, Northway Playing Field and at the Community Hub.



The Parish Council would welcome suggestions and ideas from residents as to what you would like to see now and in the future to improve biodiversity in Northway. Please feel free to get in touch.

Dog Waste

Local people have asked the Council to remind dog owners to pick up after their dogs. Please be aware it is also a legal requirement to do so. There are plenty of bins around the parish. Dog waste is toxic and can be a danger to young children and is unsightly and unpleasant when it gets on shoes and is caught in grass cutting machinery.

Scan QR to report complaints of dog fouling.



An Update from Northway Pantry

The Northway Pantry was opened in December 2023 and is now supporting twenty local families. The pantry opens on a Wednesday afternoon with an additional Friday afternoon for a couple of hours (subject to food availability).

This not-for-profit community food pantry is run and managed entirely by local volunteers who give up their time freely. Volunteer duties include collecting and sorting grocery donations, stocking the pantry, serving members who are choosing their groceries as well as being a friendly, supportive face.

It is there for anyone who lives in Northway who is struggling with food insecurity and likely to be for some time. It works as a food club with members paying a small weekly fee in return for good quality food and groceries. Membership is by referral basis only. This is necessary to ensure the pantry is supporting those most at need.



Our recently awarded Food Hygiene Level 5, Very Good, demonstrates the hard work and commitment put in to setting up and running the pantry.

The pantry relies on donations to run and without the generous support from this community, it could not continue. We have been absolutely blown away by how both individuals and businesses have come together to support the pantry and we are truly grateful. Special thanks to The Albion pub, Northway Parish Council, Tewkesbury Borough Council, Cotteswold Dairy, Spar at Bredon, Animals Only, Priors Park Pantry, Aldi and Sainsbury's whose regular support is so much appreciated. Much thanks too to all of the Northway residents who bring donations to the pantry. You are wonderful!

Here's an interesting fact - at time of writing we have saved 992 meals going to food waste. That's 1.5 tonnes CO₂! In 8 weeks! All perfectly good food that would otherwise have been thrown away by supermarkets.

Any one of us might at some point in our lives need help from a food pantry. The cost of living crisis has affected everyone and times are hard. A sudden change in circumstances, such as illness, relationship breakdown, reduction in working hours, benefit sanctions, unemployment or large debts can mean you find yourself struggling with household bills and the cost of food. It is good to know that, if this happens to you, the Northway Pantry is here in the heart of the community to help.

If you would like further information on the Northway Pantry, or you think you could help either as a volunteer or a business please email northwaypantry@gmail.com.

Air Pollution

Did you know that Northway has an air pollution monitoring device located in Kestrel Way?

Residents can see the data from this on the Borough Council's website (www.tewkesbury.gov.uk/services/environmental-health/environment).

Northway Councillors

The Parish Council is sad to report that it has recently lost two Parish Councillors, Emlyn Phennah and Cathy Blackmore, who have stepped down from their roles. Emlyn, who was Vice Chairman, joined the Council in 2017 and has been a great support during that time, he also took on responsibility for weekly checks of the defibrillator located at the junction of The Park and Hardwick Bank Road for which the Council has been very grateful. Cathy joined the Council in 2020 and has been a very active member since, always getting involved wherever she could. Cathy has headed up the new Northway Pantry project so it will not be the last we see of her. Both have been invaluable Members, and their input will be missed.

A previous vacancy has now been filled by Cllr Kelly Poole was voted onto the Council in January and is keen to represent the local community in a positive way.



Cllr Kelly Poole

There are still two vacancies on the Council so please get in touch with the Clerk (Christine Woodward) if you would like to become a Parish Councillor, or to find out more about what the role involves.

Are You Emergency Ready?

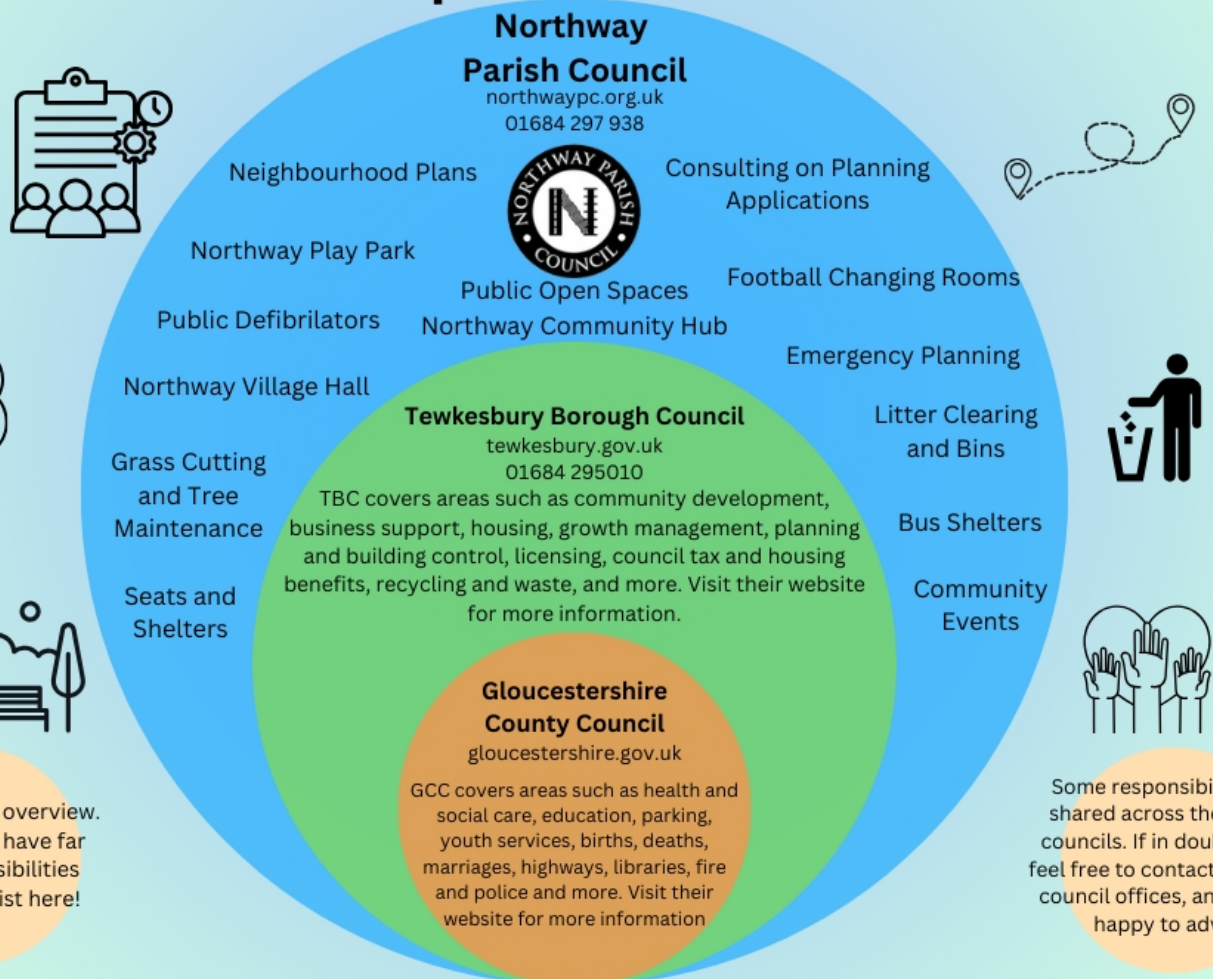
Northway Parish Council has an active Emergency Plan which lists procedures that, in the event of an emergency, will help to keep things calm and orderly. There are various buildings within the parish that will be used as 'Safe Places' or 'Rest Centres' in the emergency situations and people will be directed to these as or when necessary.

If you would like to have a copy of the Emergency Plan or would be interested in acting as a volunteer in the event of an emergency then please contact the Parish Office (details overleaf).

There are certain steps that can be taken to help prepare households for emergencies. Gloucestershire Communities Prepared has created an 'Are You Ready' booklet which can be downloaded from their website (www.glosprepared.co.uk/preparing-your-family) along with other useful information.

It is recommended that you keep all the information you may need in an emergency in one, accessible place. You will find a copy of Gloucestershire County Council's **Household Emergency Plan** enclosed in this newsletter - feel free to complete this and keep it safe for future reference.

What is Northway Parish Council responsible for?



Parish Precept 2024/2025

Over the last few months, Northway Parish Council has had to review what budgets would be required for it to maintain the current level of services. This includes allowing for any additional projects (such as the proposed new skate park) or any other demands, at the same time striving to ensure best value for residents. Once the budgets have been prepared, they are passed to the Finance Committee to review with a final recommendation made to Full Council which, if approved, is passed on to Tewkesbury Borough Council to include in the Council Tax bill.

The approved increase for next year is 1.96%, this will show on your council tax bill as 2.20%. The reason for the slight difference in the figure is due to the Council Tax Base, produced from the Council Tax system at Tewkesbury Borough Council which gives a listing of all the properties in each town or parish in the district. It then adjusts this to take into account any discount that are given, for example, single occupancy, second homes or homes that are empty or exempt.

The effect of the increases to you, per annum, are:

band A - £1.99, band B - £2.33 band C - £2.66 and band D - £2.99.

The majority of Parish Councillors live in Northway and, like yourselves, want to see the figure kept as low as possible but at the same time ensure that there are enough funds to run the Parish.

CONTACT DETAILS

Northway Community Hub and
Parish Office,
Lee Walk, Northway,
Tewkesbury, GL20 8QG

Mrs Christine Woodward
Clerk of the Council

Mrs Laura Stewart
Clerk's Assistant

Mrs Charlotte Woodward
Community Hub Caretaker/
Bookings Coordinator

Office Opening Hours
Monday-Thurs: 9.00-16.00
Friday: 9.00-12.00

Telephone
01684 297938

Email
parish.council@northwaypc.org.uk
bookings@northwaypc.org.uk

Web
www.northwaypc.org.uk

Look out for news of events on
Northway notice boards and online
(social media and webpage)

Meeting agendas and minutes
can be found on the Parish
Council webpage.

Upcoming Meetings:

Weds 13th March 2024 - Full
Council Meeting

Weds 20th March 2024-
Planning/General Purposes
Committee Meetings

Weds 27th April 2024 - Parish
Assembly

Weds 10th April 2024 - Full Council
Meeting

Weds 27th April 2024 -
Planning/General Purposes
Committee Meetings

Weds 24th April 2024 - Finance
Committee Meeting

Weds 8th May 2024 - Annual
Meeting and Full Council Meeting

Weds 15th May 2024 - Planning/
General Purposes Committee
Meetings

Weds 12th June 2024 - Full Council
Meeting

**ALL MEETINGS START AT 7PM
UNLESS STATED OTHERWISE**

Acceptance of advertising does not imply
endorsement by Northway Parish Council

Christmas Event 2023

Christmas feels such a long time ago with only 9 months until the next one! The Council hopes you enjoyed what it put on for you, including the Christmas Community Event at Northway Community Hub, taking Santa and his sleigh around Northway on a couple of evenings and providing the post box for letters to Santa. This year 175 letters were posted, being the highest number to date, which were then forwarded to Santa so he could respond to each one individually.

Although these events were all free of charge, many of you made donations and the Council were amazed at the total given of £1,180.37. The first £100.00 of this was donated to the Boys Brigade for use of the sleigh, then the remaining amount was split equally between the Northway Pantry and a budget the Council holds to help fund ongoing free weekly boxing sessions in Northway.



Northway's VAS

As most of you will have noticed, the long-awaited Vehicle Activated Sign (VAS) is now up and running. Councillors installed the VAS on the junction of The Park and Northway Lane at the start of December and it has since moved to Kingston/ Steward Road. The plan is to change its location every few weeks so it will have optimal effect in reminding drivers to slow down.



The Council has already noticed a significant decrease in vehicles speeding since it has been in place.

Hire Northway Community Hub

Contact Northway Parish Council for more information.



News From St Nicholas Church

A big thank you to all those who braved the atrocious weather conditions to attend our 'Raise the Sound' concert on Saturday 17th February. It was a brilliant night and we raised £590. The money raised is to improve our church sound system.

We continue to have weekly services while we wait to find a new priest in charge. Details of times and dates can be found on our website and face book page. www.stnicholasashchurch.org.uk

The reinstallation of the church Bells has been completed. They were removed and taken to the Bell foundry for retuning and replacement of fittings. It is great to hear them ringing again.

Dates for your Diary:

Tewkesbury Training Band Concert - Saturday 27th April
Church Summer Fete - Saturday 22nd June.

LOCAL DISCOUNT

Calling Gloucestershire...

Save 75%* on Your Energy Bills

You can save a significant amount on your home energy bill with a Puredrive battery and inverter solution without the need for solar.

Automatically stores low cost energy at off-peak times to be used when costs are high to reduce your energy bills.

01386571544



30% Off



Sight loss charity Guide Dogs is asking for volunteers to give a home to a guide dog mum and in return all costs will be covered.

As a Breeding Dog Volunteer, a doggy mum-to-be would live with you, like any other pet dog, enjoying walks and company, and when the time is right, she would give birth in your home to a litter of guide dog puppies.

You can then enjoy the company of these adorable pups for around eight weeks, before they move out to start the first stages of their guide dog training.

Volunteers must be aged 18 or over and live within an hour's drive of the breeding centre (CV33 9QJ)

Breeding Dog Volunteers look after guide dog mums until they retire, at around six years of age. After this, they are given the option to keep the mum they have cared for as a pet dog.

For more info email volunteermidlands@guidedogs.org.uk or call 0800 781 1444.

